



Grasscroft

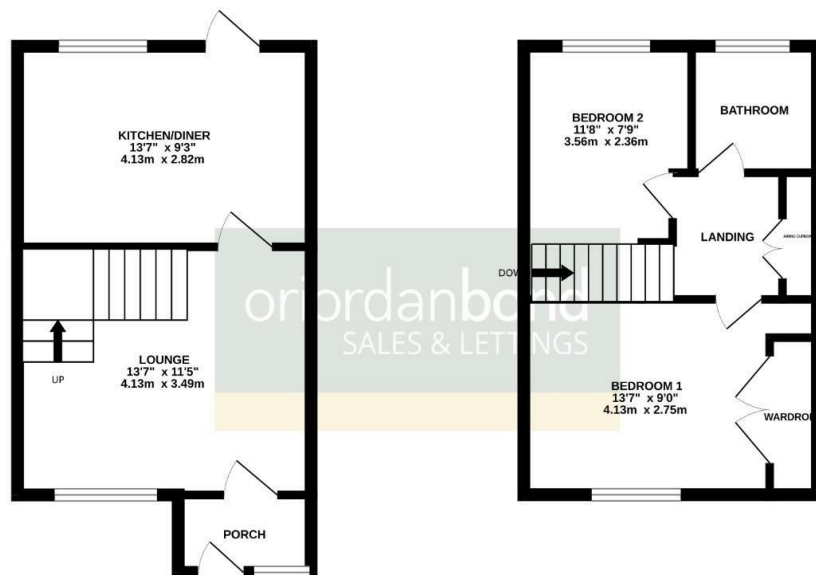
Kingsthorpe, Northampton

oriordanbond
SALES & LETTINGS



GROUND FLOOR
302 sq.ft. (28.1 sq.m.) approx.

1ST FLOOR
281 sq.ft. (26.1 sq.m.) approx.



TOTAL FLOOR AREA : 583 sq.ft. (54.2 sq.m.) approx.

Whilst every attempt has been made to ensure the accuracy of the floorplan contained here, measurements of doors, windows, rooms and any other items are approximate and no responsibility is taken for any error, omission or mis-statement. This plan is for illustrative purposes only and should be used as such by any prospective purchaser. The services, systems and appliances shown have not been tested and no guarantee as to their operability or efficiency can be given.
Made with Metropack CS2021

Grasscroft

Kingsthorpe

NN2 8TR

PRICE £199,995

Offered to the market with no onward chain is this well presented two bedroom end terraced property located in this popular part of Kingsthorpe. The property is a short walk from local amenities and countryside walks.

The accommodation comprises entrance porch, sitting room and kitchen/dining with built-in oven and hob and access to the rear garden. The first floor offers two good size bedrooms and a three-piece family bathroom and large airing cupboard. Outside is a rear garden with patio area leading to laid lawn and access to a single garage. To the front of the property is a small garden with off road parking. Further benefits include uPVC double glazing and gas radiator heating. (B/583/M)

Additional information

- Council Tax Band: B
- Energy Efficiency Rating: D

Viewing

Viewing strictly by appointment – details below

Disclaimer

O'Riordan Bond Estate Agents Limited has not tested apparatus, equipment, fittings or services and so cannot verify they are in working order. The buyer is advised to obtain verification from their solicitor or surveyor.

O'Riordan Bond Kingsthorpe Sales

01604 722007

kingsthorpe@oriordanbond.co.uk

